



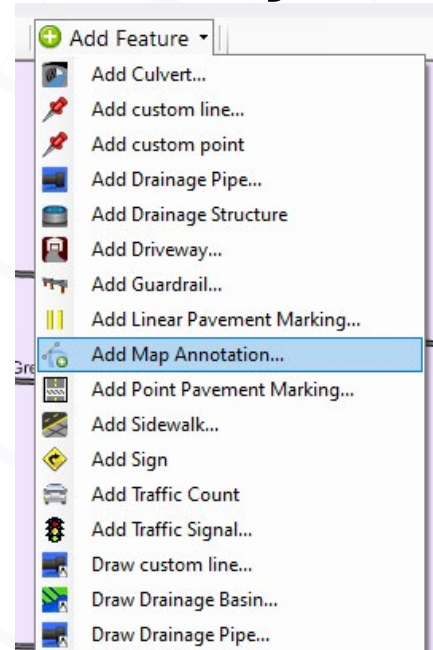
For Roadsoft help, visit
the Roadsoft Manual at

<https://roadsoft.org/help>

Roadsoft Map Annotation Layer

Roadsoft developers with the Center for Technology & Training (CTT) use feedback and suggestions from Roadsoft users to continuously improve and enhance the software. Suggestions are logged and presented to clients in our annual *Roadsoft Work Plan Survey*. Based on the survey responses, suggested features are prioritized and implemented as time and priorities allow. One standing request was to provide the ability to add notes on the map. In response to this request, Roadsoft and Roadsoft Laptop Data Collector (LDC) 2023.10 introduced the ability to add annotations to the map.

In order to create a map annotation in either Roadsoft or Roadsoft LDC, the Map Annotation layer must first be added in



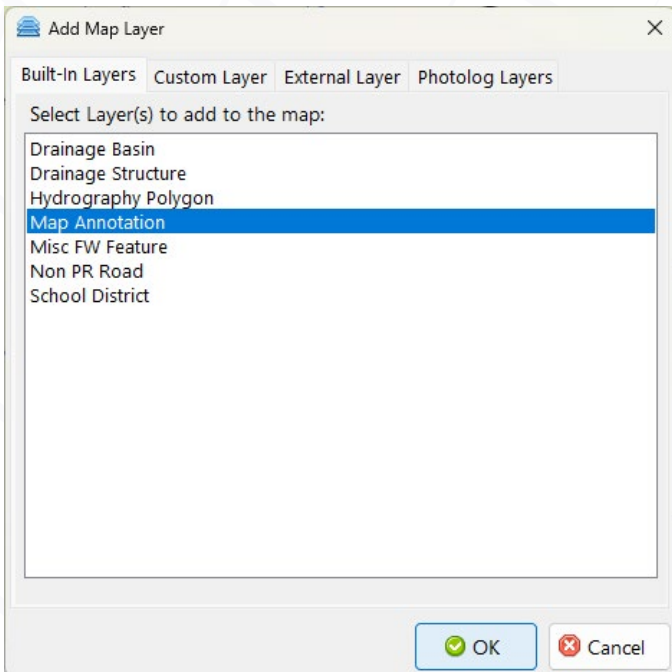
Adding an Annotation to the map in Roadsoft is as easy as selecting it under the Add Feature tab.

Roadsoft. Once the layer has been added to Roadsoft, all exports for the LDC, except those flagged for TAMC collection, will include the annotation layer. The process of adding an annotation layer is fairly straightforward and is similar to adding any other layer to Roadsoft.

Add a Map Annotation Layer

1. Under the Map Layers window, select the green Add Map Layer button
2. In the Built-in Layers tab, select Map Annotation from the list
3. Select the OK button

Once the Map Annotation layer has been added, annotations can then be added in both Roadsoft and the LDC.



Adding the Annotation layer is similar to adding other layers to Roadsoft. Select the Add Map Layer button, then select Map Annotation on the Built-In Layers tab to add the layer.

The Center for Technology & Training at Michigan Technological University publishes Roadsoft Roundup four times a year. To obtain permission to reprint any articles or graphics from Roadsoft Roundup, or to subscribe, please contact the CTT.

Director: Tim Colling, PhD, PE

Senior Project Manager: Nick Koszykowski

Principal Programmer: Luke Peterson

Software Developers: Jacob Coulson, Scott Dohrman, Anupama Josyula, Justin Milliman, Daniel Morgan

Civil Engineers: Chris Gilbertson, PhD, PE; Zack Fredin, PE; Ingrid Sandberg, PE; Pete Torola, PE

Systems Support: Christoforo DelReal, Alex Radke

User Interface/User Experience Specialist: Lindsey Wells

Editor: Scott Bershing

Center for Technology & Training

Michigan Technological University

309 Dillman Hall

1400 Townsend Dr.

Houghton, MI 49931-1295

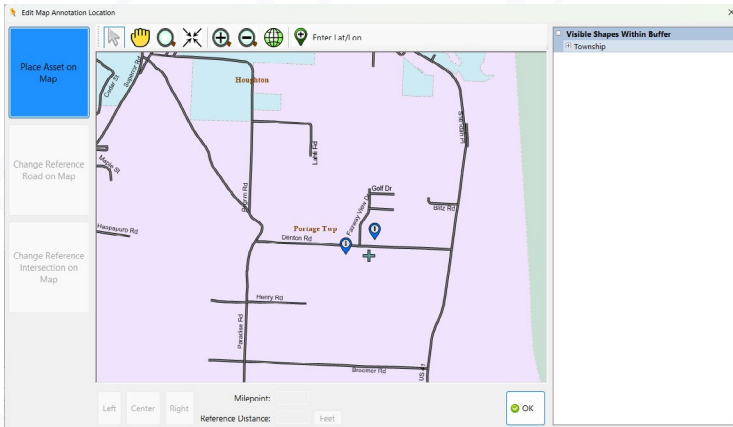
Telephone..... (906) 487-2102

Fax (906) 487-3409

E-mail..... roadsoft@mtu.edu

Web..... www.roadsoft.org

Roadsoft® Roundup

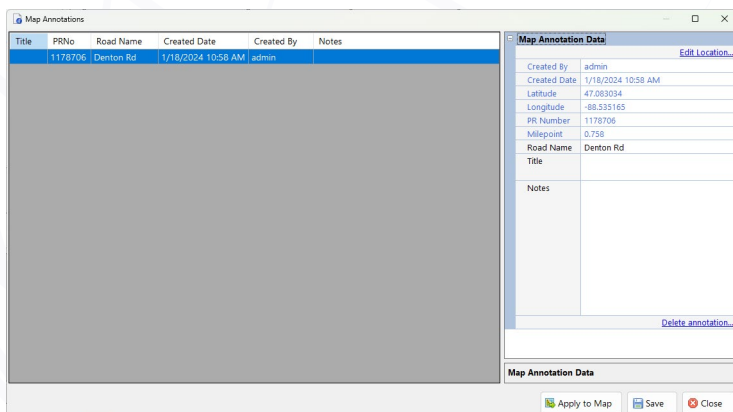


In Roadsoft, select the spot on the map to add the annotation. Referenced roads or intersections can also be changed if the annotation is placed close enough to a road segment.

Adding or editing map annotations is similar in both Roadsoft and the LDC, but the process varies slightly based on the application.

Add a Map Annotation in Roadsoft

1. Select the Map Annotation layer name from the Point Layers list to make it the current layer.
2. Click the Add Feature tab in the Map Tools menu.
3. Select Add Map Annotation.
4. Edit Map Annotation Location window will appear.
5. Select the location on the map to add the annotation (If the



Once placed on the map, annotations can be selected and edited to modify their location or associated Road Name, Title and Notes can be added, or the annotation can be deleted.

annotation is placed close to a road segment, that segment will be referenced).

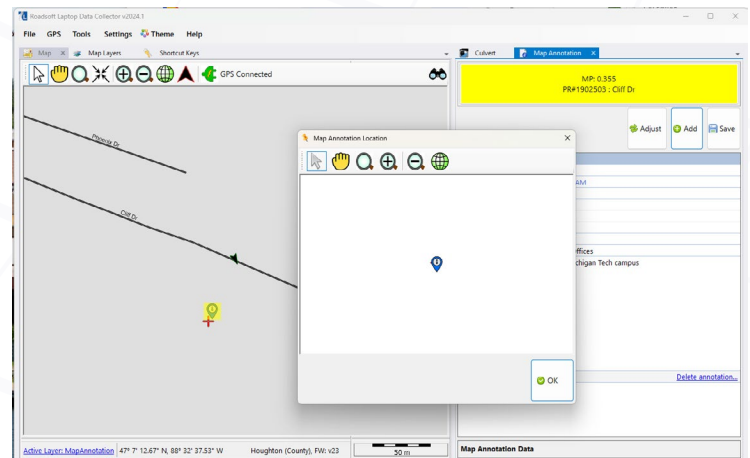
6. If need be, click the Change Reference Road on Map button and/or the Change Reference Intersection on Map button to change the referenced segment or intersection, respectively.
7. Click the OK button to close the window and add the annotation to the map.

Edit or Delete a Map Annotation in Roadsoft

1. Select the Map Annotation layer name from the Point Layers list to make it the current layer.
2. Select the annotation(s) to edit.
3. Double-click or click the View Module button in the Map Tools menu.
4. In the Map Annotation Module, edit the location, Road Name, Title, or Notes.
5. To save the data, click the Save button.
6. To delete the annotation, click the Delete annotation link.
7. Click the Close button to close the Map Annotation window.

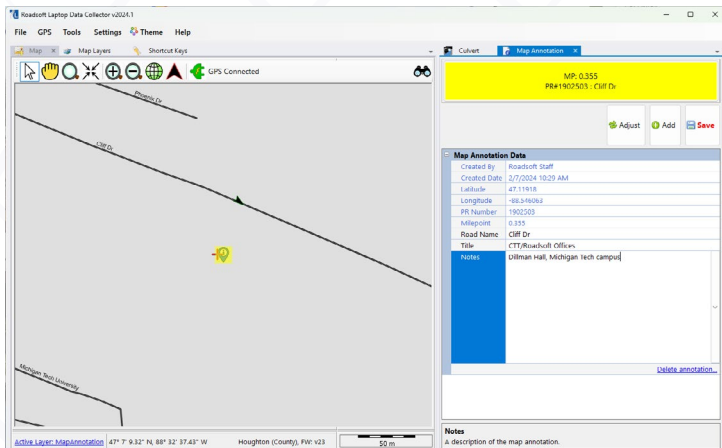
Add a Map Annotation In LDC

1. Select the Add button from the Map Annotation tab.
2. Click the OK button to place the annotation on the map.
3. The LDC automatically determines the annotation location



In the LDC, the map annotation will be placed at the GPS location. Select the Map Annotation tab, click on the Add button, then click on the OK button to confirm.

Roadsoft® Roundup



Once added in the LDC, the map annotation can be edited or deleted. The Road Name, Title, and Notes can be added or edited. Don't forget to hit the Save button when done.

based on GPS coordinates. If the annotation is placed close enough to a road segment, it will reference that segment and populate the Road Name field.

4. Enter the annotation Title and Notes if needed.
5. Click the Save button to close the window and add the annotation to the map.

Edit or Delete a Map Annotation in LDC

1. Select the annotation to edit on the map.
2. Select the Adjust button to set the location to the current GPS location or edit the Road Name, Title, or Notes as needed.
3. To save the data, click the Save button.
4. To delete the annotation, click the Delete annotation link.
5. Verify the deletion by selecting the Yes button.

Suggestions for further Roadsoft or Roadsoft LDC additions and enhancements are always welcome. Providing an explanation of how the suggestion would fit into or improve your workflow is extremely helpful in providing context for CTT software staff. Send suggestions to roadsoft@mtu.edu. All of the suggestions that are submitted are added to a list of potential future program enhancements. These suggestions are then presented at the fall Roadsoft User Group (RUG) meeting and will be included in the next annual work plan survey.

CTT Ending Support for SQL Server 2014

Microsoft recently announced that SQL Server 2014 has reached the end of its extended support life-cycle and it will not be supported after July 9, 2024.

In response to Microsoft's announcement, the CTT will be ending our support of SQL Server 2014 for Roadsoft and MERL in December, 2024. Earlier releases in 2024 will provide reminders during login to those agencies connecting to SQL Server 2014 instances about the upcoming end of support.

Starting with the 2024.12 release of Roadsoft and MERL, agencies will no longer be able to connect to an SQL Server 2014 instance.

Supported Versions

The CTT will continue to support SQL Server versions 2016, 2017, 2019, and 2022. We recommend that agencies in need of an update use SQL Server 2022 to maximize the available life span of the product and reduce the frequency of future SQL server updates. We also recommend that agencies install our version of SQL Express, even if they have their own standalone SQL server license. Installing our SQL Express instance is straightforward and makes it easier to create and restore Roadsoft backups, as well as making it easier to create new databases.

SQL Express installers are available at <https://roadsoft.org/downloads/sql-downloads>. There is online help documentation available on upgrading your SQL Server in the Roadsoft Manual at [Update SQL Server Express](#).

Help documentation for locating the current SQL Server version is available at [Locate SQL Server Version](#).

For questions or assistance with determining the SQL Server version, or with updating SQL Server, email roadsoft@mtu.edu.

Microsoft Ending Support for Windows 10

This is an early warning that Microsoft also announced that they

Roadsoft® Roundup

will be ending their support for Windows 10 on October 14, 2025. Following Microsoft's lead, the CTT will continue to support Windows 10 until October of 2025.

Even though Windows 10 will still function after the deadline, continued use may increase an organization's exposure to security risks as Microsoft will no longer be providing security updates.

Although this end of support for Windows 10 by the CTT is over a year down the road, agencies should keep this in mind when upgrading existing computers. Depending on the age and specifications of computers running Windows 10, hardware upgrades or computer replacement may be required in order to upgrade to Windows 11. Agencies should start investigating this now instead of waiting until the last minute.

Microsoft Windows 11 system requirements, along with an explanation of upgrade options, can be found at <https://support.microsoft.com/en-us/windows/windows-11-system-requirements-86c11283-ea52-4782-9efd-7674389a7ba3>.

Roadsoft system requirements can be found at <https://roadsoft.org/about/system-requirements>. Contact Roadsoft technical support at roadsoft@mtu.edu for more information.

Roadsoft On the Road/Tech Assist Tuesdays

Roadsoft On The Road is a personalized in-person technical assistance session at your agency. You provide your Roadsoft data and a list of topics you'd like to cover, and we'll take a look at everything and then provide assistance to work through your list in person. Send an email to roadsoft@mtu.edu to request a visit. Please include your list of topics and possible timeframe(s) that work with your agency, and we'll take a look at our schedule and plan the visit.

If you're not able to meet in person, this is a reminder that the CTT also offers online technical assistance with our virtual *Tech Assist Tuesdays* sessions. Sessions are available on Tuesdays with one hour slots at 9, 10, and 11 a.m.

Visit <https://www.roadsoft.org/articles/roadsoft-tech-assist-tuesdays> to request a Tech Assist Tuesday session. If another day or time would work better, send an email to roadsoft@mtu.edu and we'll find a time that fits your schedule.

Upcoming Roadsoft Training

2024 Roadsoft Special Topics: Getting Started with the Roadsoft Mobile App
Thursday, February 22, 2024

<http://ctt.nonprofitsoapbox.com/2024rsmobile-feb>

2024 Roadsoft Special Topics: Getting Started with the Laptop Data Collector
Tuesday, February 27, 2024

<http://ctt.nonprofitsoapbox.com/2024rsldc-feb>

Master the Roadsoft Data Collection Cycle for Planning Organizations
Tuesday, March 26, 2024

Meeting the TAMC Investment Reporting Requirements Using Roadsoft
Thursday, March 28, 2024

What's New in Roadsoft/Roadsoft User Group Meeting
Tuesday, April 9, 2024

Visit <https://roadsoft.org/training> to see all upcoming Roadsoft training events.

Visit <http://ctt.nonprofitsoapbox.com/upcoming-events> to see all upcoming CTT training events.

Agencies looking for more information and scheduling of upcoming PASER and IBR training should visit <https://ctt.mtu.edu/events/tamc-data-collection-training>

Agencies that have specific technical support questions or issues, or those that would like personalized training, can send a request to roadsoft@mtu.edu.

The CTT Continuing Education policy can be viewed at <https://ctt.mtu.edu/ContinuingEducation>