

# Roadsoft Roundup

January 2013  
Volume 12, Issue 4

*“The interface has been simplified and standardized. It has been redesigned to have a common look and feel consistent with the Sign and Culvert modules.”*

-Nick Koszykowski  
Roadsoft Software Engineer

## A Redesigned Road Module

Roadsoft users can look forward to a completely overhauled Road module with the upcoming release of Roadsoft Version 7.6. The module's redesign is being headed by Nick Koszykowski, a software engineer with 18 years of experience in software design. The features and user-interface changes reveal an easier to use, more comprehensive Road module that will allow users to better track and edit their road network data.

### New features

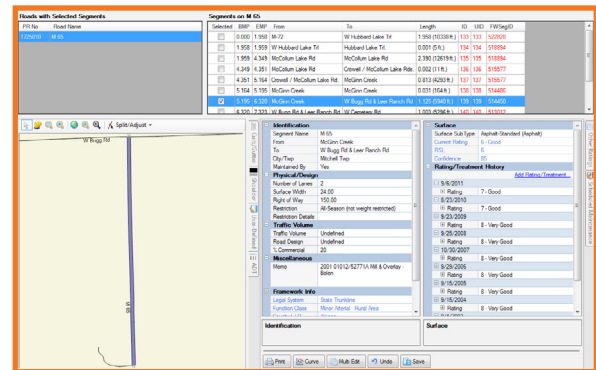
The Road module's *Traveler* feature, which provided users with a 3-line representation of a selected PR, has been replaced by a *Mini-Map* of the segments on the PR. Within the *Mini-Map* window, users can split segments, adjust split points, and delete user-added splits directly.

In previous versions of Roadsoft, selecting a road segment on the map defaulted to the smallest segment on a road. With the addition of a *Road Map Selection* menu, users will be able to choose how they make segment selections when working in the *Road* layer. Users can select road segments by various criteria listed in the menu including: *Road Segment*, *Framework Segment*, *PR*, *NFC*, *Act 51*, *Surface Type*, or *Lanes*.

### Improved features

“The interface has been simplified and standardized,” says Koszykowski. “It has been redesigned to have a common look and feel consistent with the Sign and Culvert modules.” In addition, the collapsible and dockable windows that are featured in other modules have been incorporated into the *Road* module.

“One of the best parts of the redesign is the addition of the *Multi-Edit* menu to the Roadsoft map,” says Koszykowski. Multiple segments can now be edited by either right-clicking on the Roadsoft map and selecting the *Multi-Edit* menu, or by using the *Multi-Edit* button in the Road module window.



The new Road module

Mass edits can now be made quickly through the improved *Multi-Edit* form. “Users will have the capability to edit attribute data for all selected segments on all of a road network's PRs, or for all selected segments on a single PR,” explained Koszykowski.

Version 7.6 will provide even more flexibility by allowing users to edit road names in their road network. Two grids at the top of the *Road* module window display PR numbers and their road names along with the road segments located on the PRs. Users can simply right-click a PR in the grid to edit the default name.

The Road module has been further improved by combining *Rating and Treatment History* into a single chronological history for a road segment, eliminating the archiving of history due to a surface type change or reconstruction. Additionally, the Base, Drain, and Ride ratings have been separated from the *Rating History/Construction History* tab to create the *Other Ratings* tab. Also, *Scheduled Maintenance* for a segment can now be entered for more than one specific date. Previously, only one *Scheduled Maintenance* for a segment could be scheduled at a time, according to year.

Roadsoft Version 7.6 along with Framework Version 12 will be available in spring of 2013.

The Center for Technology & Training at Michigan Technological University publishes Roadsoft Roundup four times a year. To obtain permission to reprint any articles or graphics from Roadsoft Roundup, or subscribe, contact the CTT.

**Director:** Tim Colling, Ph.D., P.E.

**Project Leader:** Gary Schlaff

**Software Engineers:** Mary Crane, Nick Koszykowski, Nancy Moore,

Luke Peterson, Chris Pinnow, Mike Pionke, Jason Poll, Andrew Rollenhagen

**Civil Engineers:** Chris Gilbertson, Ph.D., P.E., John Kiefer, P.E., Melanie Kueber, P.E.

**Editors:** Shaughn Kern, John Rynanen **Intern:** Belle Wirtanen

### Center for Technology & Training

Michigan Technological University

309 Dillman Hall

1400 Townsend Dr.

Houghton, MI 49931-1295

Telephone ..... (906) 487-2102

Fax ..... (906) 487-3409

E-mail ..... [Roadsoft@mtu.edu](mailto:Roadsoft@mtu.edu)

Web ..... [Roadsoft.org](http://Roadsoft.org)